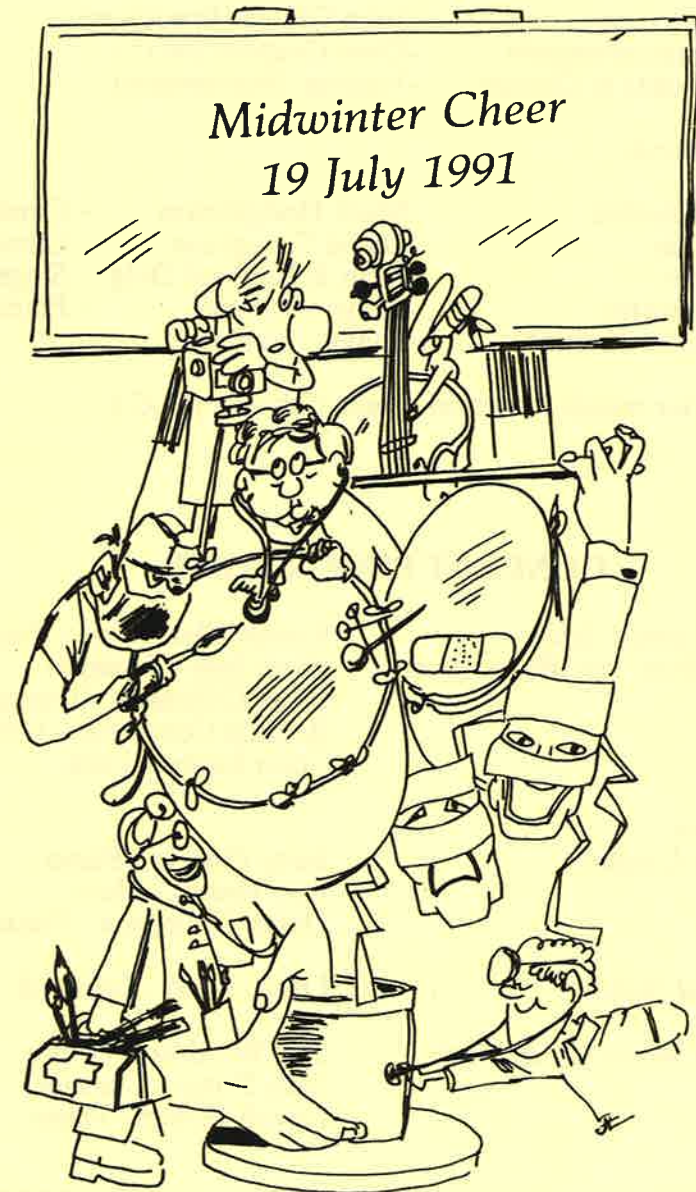
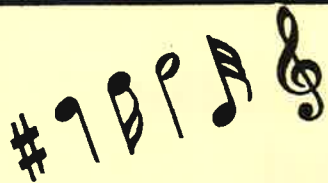


# Artist Doctors Association of New Zealand



*Postgraduate  
Office  
Printery*  
**POP**

TYPESET AND PRINTED BY  
POSTGRADUATE OFFICE PRINTERY  
TELEPHONE 640-410



# N.Z.A.D.A. MIDWINTER FESTIVAL 19th JULY 1991

## PROGRAMME

7:15 p.m. Art & Craft Display -Various  
 Food & Wine -Ladies Committee

8:00 p.m. Welcome -John Gillies (President)  
 Announcements -Dave Graham (M.C.)  
 Soloists & Groups -Various (Performers)

9:15 p.m. Interval

9:30 p.m. Orchestra -Mark Hodgkinson - Conductor  
 Choir -David Troughton - Choirmaster  
 Duet -John & Rachael Doig - Singers  
 Concerto -Robert Schmidli - Pianist  
 Concertmaster -Shailer Weston

11:00 p.m. After-match Function -Dave Graham (M.C.)

Jazz Piano Selection *Various*

Terry O'Brien - Piano

Trio No.6 In D Major *Franz Haydn*

Frank Davie - Violin  
 Louise Thomson - Cello  
 Margot Thomson - Piano

"Remembering Prague" *Stephen Pak*

John Lyftogt - Guitar

Original Writings *Various*

Alan Clarke - Reader

"Swansea Town" *Arr. Gustav Holst*

N.Z.A.D.A. Choir  
 David Troughton - Conductor  
 Pauline Horrell - Piano  
 Howard Livingston - Voice

"Go Down Moses" *Parker & Shaw*

"Afton Water" *David Willcocks*

## INTERVAL

"Magnificat" *Joachim Pachelbel*

David Troughton - Conductor

"Duetto-La Ci Darem" *W.A. Mozart*

Mark Hodgkinson - Conductor  
 John Doig - Voice  
 Rachael Doig - Voice

Concerto No.2 In A Major *Franz Liszt*

Mark Hodgkinson - Conductor  
 Robert Schmidli - Piano

## CONCERT PROGRAMME

"Battle Suite" *Samuel Schiet* Robert Blackmore - Trombone  
 "Basin Street Blues" *Arr. Butch Green* Chris Bull - Trumpet  
 Brian Gilkinson - Trumpet  
 Belinda Constable - Horn  
 Colin Eaton - Tuba

Sonata For Two Betty Guerin - Piano  
 Flutes & Piano *Loeillet* Ann Brown - Flute  
 Helen Crampton - Flute

"Only He" *Lloyd-Webber* Leslie Bond - Guitar & Voice

Trio No.2 In A Minor *C.P.E. Bach* Tim Wilkinson - Flute  
 Sally Botur - Clarinet  
 Deyell Jensen - Piano

## SPONSORS

**Allen & Hanbury**  
**Ciba-Giegy**  
**Eli Lilly & Co. (N.Z.) Ltd.**  
**Merck Sharp & Dohme (N.Z.) Ltd.**  
**Obex Medical Ltd.**  
**Pharmaco (N.Z.) Ltd.**  
**3M Riker**  
**Sandoz Pharma Ltd.**  
**Schering A.G. (N.Z.) Ltd.**  
**Wyeth Pharmaceuticals**

